

BULLETIN 2

ITALIAN CUP SPRINT



1° & 2° ROUND

WORLD RANKING EVENTS



29 MARCH 2025

ARENZANO (GE)



WWW.FISO.IT/GARA/20251

30 MARCH 2025

GENOVA VOLTRI



WWW.FISO.IT/GARA/20252

#ROADTOWOC26



FEDERAZIONE
ITALIANA
SPORT
ORIENTAMENTO



RACE PROGRAMME

Saturday, 29th March – ITALIAN CUP SPRINT 1° round / WRE – Arenzano

<https://www.fiso.it/gara/20251>
[44.401873, 8.679742](#)

13.00 race office opens

15.00 first start

18.00 prize giving ceremony

Sunday, 30th March – ITALIAN CUP SPRINT 2° round / WRE – Genova Voltri

<https://www.fiso.it/gara/20252>
[44.428294, 8.747907](#)

8.30 race office opens

10.00 first start

14.00 prize giving ceremony

Embargoed areas with permitted routes can be consulted at this link

https://www.fiso.it/files/f_media/2024/07/34358.pdf .

In Arenzano is possible to sleep in the embargoed area, but the accommodation must be reached after 6 p.m. on Saturday.

ORGANISING COMMITTEE

info@woc2026.it

Event director: Gianluca Carbone
gianluca.carbone@woc2026.it / +393356966752

IOF Event Adviser e DT: Simone Grassi
Race director: Aaron Gaio
Course setters: Alessio Tenani / Marcello Lambertini
Start: Daniele Pagliari
Race office: Eleni Lutaj
IT: Daniele Guardini
Speaker: Stefano Galletti



PAYMENT

All entries must be paid in advance with a bank transfer, one for the entire club. Summary of fees for each club are upload online, please wait and check the amount before payment.

Please note that we will accept payments only in euro currency.

Please send the receipt of payment until Friday evening to info@woc2026.it

IBAN: IT55E0538701411000003861810

BIC: BPMOIT22XXX

Payee: COMITATO GENOVA 2026 A.S.D.

Reason: entries club XXXX

PUNCHING SYSTEM

The punching system used is SPORTident SIAC Air+. You can hire Sport-Ident (no Air+) for 2 € a day.

BIBS

Bibs will be provided at the race office, one bib for both competitions.

GPS

15 ME and 15 WE will use GPS units (Livelox tracker).

This is the list of athletes:

M ELITE	W ELITE
Hus Wouter	Zaffanella Guenda
Zagonel Giacomo	Pezzati Elena
De Cuyper Warre	Lucchetta Jessica
Reiner Matthias	Ramstein Laura
Pezzati Tobia	De Biasi Maddalena
Bujdoso Zoltan	Olejniak Agata
Roudny Martin	Delenne Annabelle
Verove Guilhem	Dallera Caterina
Glonek Jakub	Andersen Cecilie
Delenne Adrien	Lind Josefine
Mariani Francesco	Beauvir Maëlle
Barros Vallet Mathias	Agervig Kristiansson Malin
Polsini Tino	Maramarosi Rita
Krivda Tomas	Gemperle Eline
Michiels Yannick	Agervig Kristiansson Ida

If you need a vest, you can borrow it at the race office, GPS devices will be delivered at the start.

PRIZE GIVING CEREMONY

Top 3 for all competitive classes will be rewarded, except for Elite classes where top 6 competitors will be awarded prizes.

There will be a prize for all under 10 competitors. No prizes for classes Beginners and Direct.

LIVELOX

You can add your track on Livelox.

Race Arenzano: <https://www.livelox.com/Events/Show/150624/WRE-Arenzano-Coppa-Italia-1>

Race Voltri: <https://www.livelox.com/Events/Show/150625/WRE-Voltri-Coppa-Italia-2>

All participants are reminded that it is prohibited to upload their GPS tracks to Strava or other social media before the end of the competition, under penalty of disqualification.

CLASSES

Competitive classes:

M/W12, M/W-14, M/W-16, M/W-18, M/W-20, M/W Elite, M/W B, M/W35+, M/W40+, M/W45+, M/W50+, M/W55+, M/W60+, M/W65+, M/W70+, M/W75+

Non-competitive classes:

M/W10, BEGINNERS, DIRECT

MODEL EVENT and TRAINING

From Friday a Model Event (score with suggested course) will be available in Genova Pegli.

Information here: https://www.fiso.it/files/f_media/2025/03/36673.pdf

LENGTHS

<i>Class</i>	<i>Saturday</i>	<i>Sunday</i>	<i>Class</i>	<i>Saturday</i>	<i>Sunday</i>
M10*	1.5 + 25	1.2 + 10	W10*	1.5 + 25	1.2 + 10
M12	1.9 + 40	1.5 + 25	W12	1.9 + 40	1.5 + 25
M14	2.4 + 60	2 + 50	W14	2.4 + 60	2 + 50
M16	3 + 80	2.2 + 80	W16	2.3 + 55	2 + 60
M18	3.5 + 105	2.6 + 100	W18	2.9 + 75	2 + 65
M20	3.5 + 105	2.6 + 100	W20	2.9 + 75	2 + 65
ME	4.1 + 130	3.2 + 130	WE	3.5 + 110	2.6 + 95
MB	2.2 + 55	1.7 + 35	WB	1.8 + 45	1.5 + 35
M35	3 + 80	2.2 + 80	W35	2.4 + 55	2.1 + 70
M40	3 + 70	1.9 + 50	W40	2.4 + 55	2.1 + 70
M45	3 + 70	1.9 + 50	W45	2 + 40	2 + 60
M50	2.5 + 60	1.9 + 60	W50	2 + 40	2 + 60
M55	2.5 + 60	1.9 + 60	W55	1.8 + 45	1.5 + 35
M60	2.3 + 55	2 + 60	W60	1.8 + 45	1.5 + 35
M65	2.2 + 55	1.7 + 35	W65	1.8 + 45	1.5 + 35
M70	2.2 + 55	1.7 + 35	W70	1.8 + 40	1.5 + 25
M75	1.8 + 40	1.5 + 25	W75	1.8 + 40	1.5 + 25
DIRECT	3 + 65	1.7 + 50	ESO	1.9 + 40	1.5 + 45

* In the MW10 categories, "ghosting" by an adult is allowed, provided the adult has already finished their race or is not participating, and they may follow the child for safety reasons without assisting.

MAXIMUM TIME

Maximum race time is 1h.

RESULT

Live result on <https://app.liveresults.it/genova2025>



COMPLAINTS

Complaints must be addressed to the Race Director, who will handle them in accordance with paragraph 3.7.7 of the FISO RTF.

Complaints submitted more than thirty minutes after the publication of the official results cannot be accepted.

SATURDAY

ARENA, SERVICES and PARKING

Arenzano (GE)

Parking: piazza Paolo Rodocanachi

<https://maps.app.goo.gl/RTRmKKXScYqFbBtg7>

It will be possible to reach the arena exclusively via Via Chiossone, both for those arriving by car and those arriving by train.



WC and showers at Palazzetto dello sport Paolo Corradi

<https://maps.app.goo.gl/bBz8yMtgKRVwGCBW7>



MAP

Arenzano (CS/T 1408)

2025 (M. Lambertini - S. Curzio), ISSprOM 2019-2.

Scale 1: 4.000, 2.5 m for all classes.

Format A4; the map is printed on tear-resistant material; plastic protective sleeves are available at the start for anyone who wants them.



RACE TERRAIN

Residential areas alternated with city parks of various sizes. Presence of staircases, a network of more and less intricate streets, and generally gentle elevation changes.



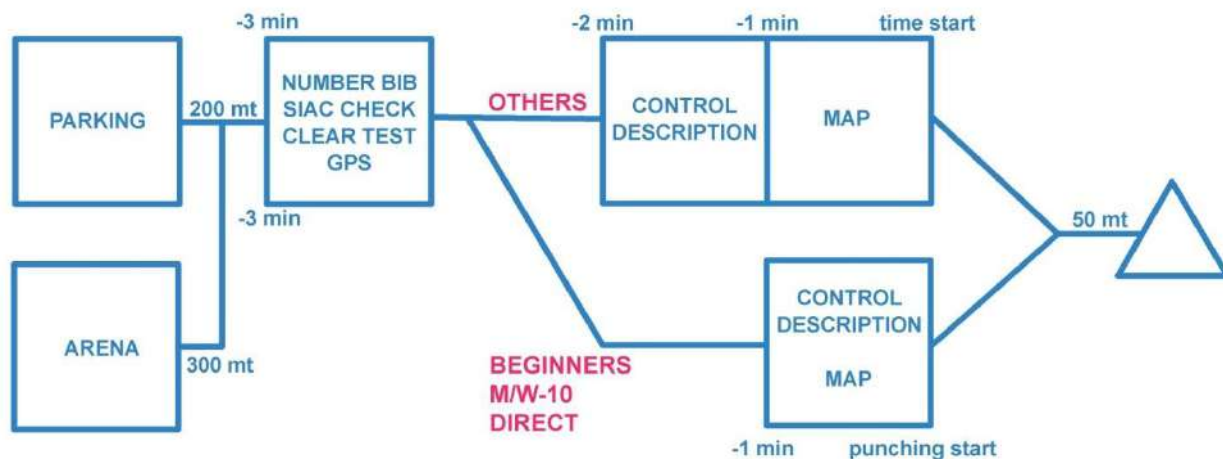
START

The start is a 5-minute walk from the arena; follow the signs. Warm-up is only allowed on the road between the arena and the start.

The call will be made at the -3 minute; there will be two separate paths for competitive categories and Beginners – M/W-10 – Direct.

The control descriptions are available inside the starting corridor, and adhesive tape and scissors will be provided. They are also printed on the race map.

The start is a delayed start, and the start point is 50 meters from the map distribution.



TECHNICAL INFORMATION

For the M/W Elite categories, there will be a spectator point near the finish, coinciding with the last control, after which a mandatory section must be followed, marked both on the map and on the ground.

It is reminded that the non-crossable symbols on the map indicate areas where crossing is also prohibited in reality, even if they might be passable: for example, fences, hedges, and ponds (example in the photo). There will be checks by the judges along the course.



The competition area is open to vehicular traffic. The main road crossings will be monitored by designated personnel, but participants should still exercise due caution. On the map, some of these pedestrian crossings are marked with the specific symbol 710.1 (optional crossing), but they are not mandatory, even if the straight line connecting two control points passes through that location.

SUNDAY

Attention! On the night between Saturday and Sunday, daylight saving time returns. Move your clocks forward by one hour to avoid being late!

ARENA, SERVICES and PARKING

Genova Voltri

Parking: piazza Caduti Partigiani Voltresi (100 reserved spots, no camper)

<https://maps.app.goo.gl/Yncor5t4WT9WC1Fu5> and piazza Gaggero (free parking)

<https://maps.app.goo.gl/hh9NHVU9HvFtaHBbA>

WC and changing room at palestra Capannoni di Voltri, vico Limisso 8

<https://maps.app.goo.gl/4HWArbkNSDgZHaNX9>

Arena Italian gardens: <https://maps.app.goo.gl/qeDVmp7YpqyitnE16>. It is not possible to build club tents, few covered areas.



MAP

Genova Voltri (CS/T 1352)

2024-2025 (S. Curzio, M. Lambertini, A. Tenani), ISSprOM 2019-2.

Scale 1: 4.000 for classes M/W Elite, M/W-18, M/W-20; scale 1:3.000 for all others classes, contours interval 2.5 m

Format A4; the map is printed on tear-resistant material; plastic protective sleeves are available at the start for anyone who wants them.

Last map: <https://eventor.orienteering.org/Documents/Event/8253/1/Old-map-OWC-2024>
<https://eventor.orienteering.org/Documents/Event/8254/1/Old-map-OWC-2024-warm-up>

RACE TERRAIN

Historical park (Villa Duchessa di Galliera) with an extensive network of paths, various types of vegetation, and elevation changes. Presence of stairways, tunnels, and terraces of different kinds.



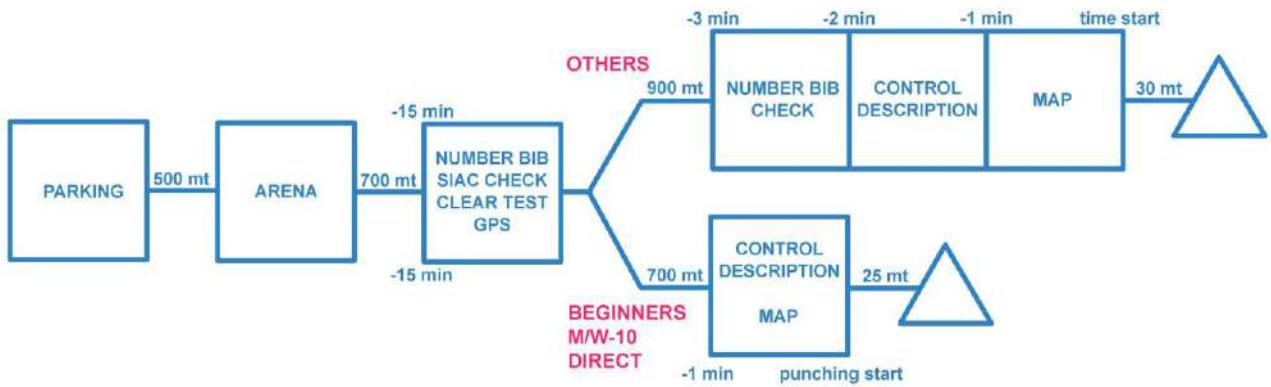
START

The start is a 15-minute walk from the arena; follow the signs. Warm-up is only allowed on the road between the arena and the start.

The call will be made at the -15 minute; there will be two separate paths for competitive categories and Beginners – M/W-10 – Direct.

The control descriptions are available inside the starting corridor, and adhesive tape and scissors will be provided. They are also printed on the race map.

The start is a delayed start, the start point is 30 meters from the map distribution for competitive classes, 25 meters for Beginners - M/W-10 – Direct.



TECHNICAL INFORMATION

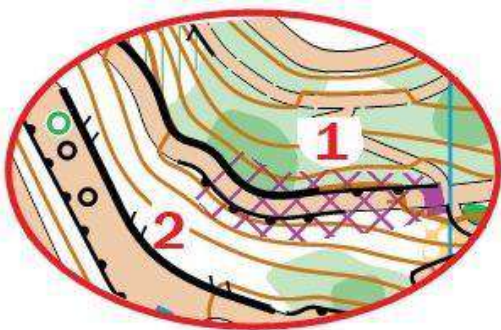
For the ME class, a map flip is planned, with a front-and-back course.

There are passages, including those with stairs, that may have limited visibility, especially in case of bad weather: please pay attention (example in the photo).



Some trails cannot be used and are marked as prohibited on the map (Example 1); they will also be highlighted on the ground with tape to prevent access (photo below).

It is also reminded that all non-crossable symbols on the map indicate areas where crossing is prohibited in reality, even if they may be passable: for example, fences (including artificial ones created with tape – Example 2), hedges, and ponds. There will be checks by the judges along the course. Some sections are also marked with tape.



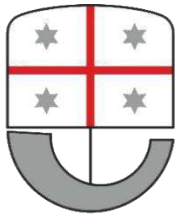
Event organized by:



With the technical collaboration of:



With the patronage of:



REGIONE LIGURIA



COMUNE DI GENOVA

And the collaboration of:

Istituto Comprensivo Voltri 1 – ATI Villa Galliera